

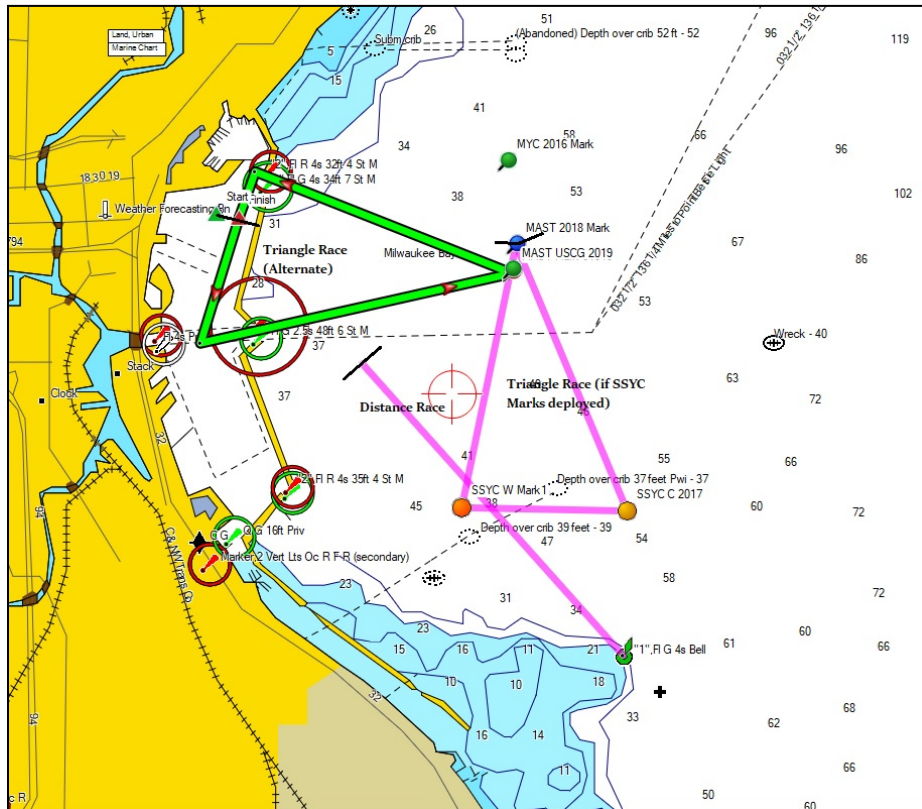
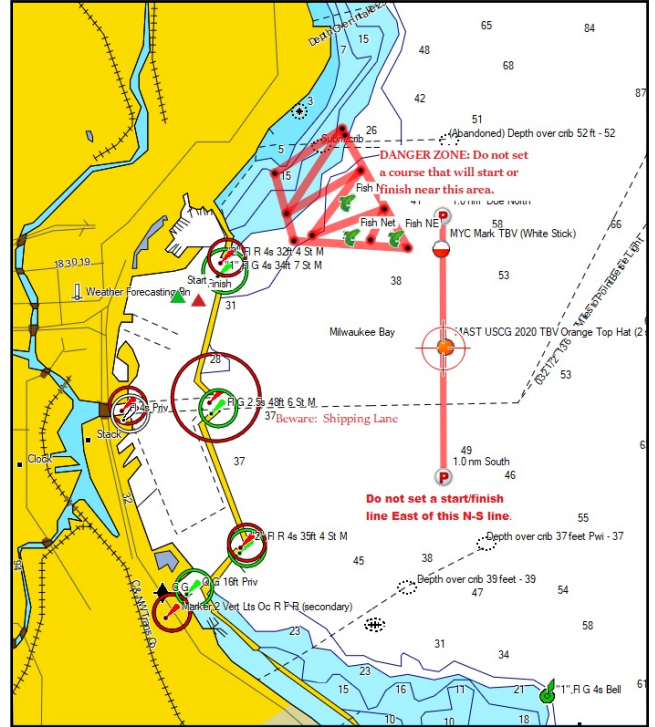
2020 MAST Race Courses

The course will be a windward /leeward course unless otherwise indicated in the race schedule. The courses will run from the Committee Boat to “center” pin (MAST Mark) and back to the throw in buoy used for start, or as indicated in the accompanying charts.

All windward /leeward races will be twice around unless they are shortened by a signal from the Committee Boat, (Shorten-Course flag - International “S” flag, or by hail). Yachts may set a spinnaker in three of these races as specifically noted in the schedule of races and with proper notification of the committee boat prior to their start. If a windward/ leeward race in which spinnakers are allowed is abandoned, the Race Chairperson shall identify and notify the fleet of an alternate windward/ leeward race in which spinnakers will be allowed.

Triangle Courses and Medium Distance Course.

Triangle Courses are normally sailed in an anti-clockwise rotation. The direction may be reversed at the discretion of the committee boat as well as the modification of the starting mark.



Approximate GPS Mark Locations: (GPS locations have not been verified at the time of this printing)

MAST: N43 02.195 W87 50.764

SSYC W:
N43 01.051
W87 50.826

SSYC C:
N43 01.315
W87 49.903

Bell Buoy:
N42 59.349
W87 49.839