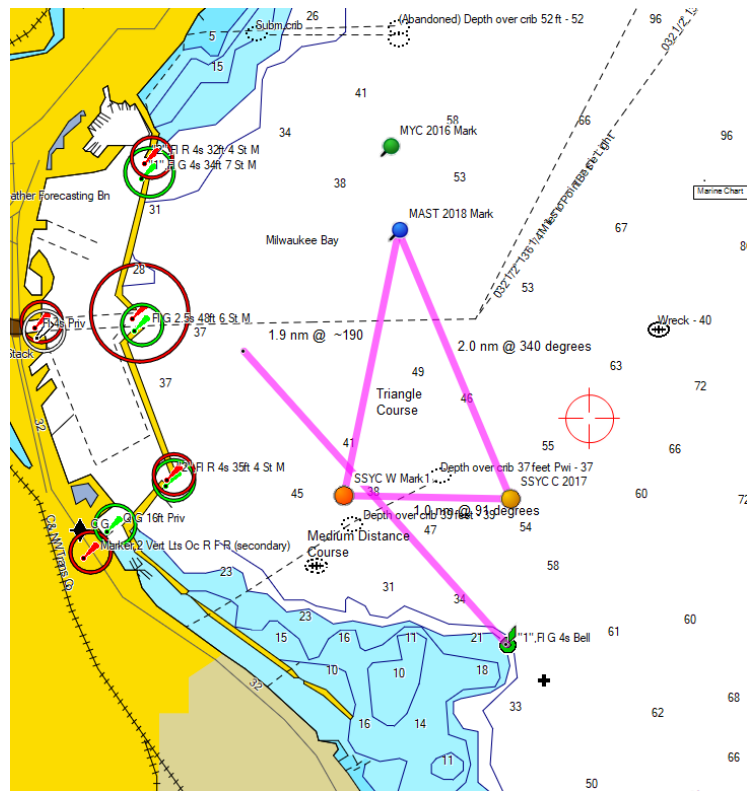


# 2019 MAST Race Courses



Windward – Leeward Course



Triangle Course and Medium Distance Course. Triangle Course normally sailed in an anti-clockwise rotation. The direction may be reversed at the discretion of the committee boat as well as the modification of the starting mark.

Approximate GPS Mark Locations: (GPS locations have not been verified at the time of this printing)

- MAST: N43 02.195 W87 50.764
- SSYC W: N43 01.051 W87 50.826
- SSYC C: N43 01.315 W87 49.903
- Bell Buoy: N42 59.349 W87 49.839